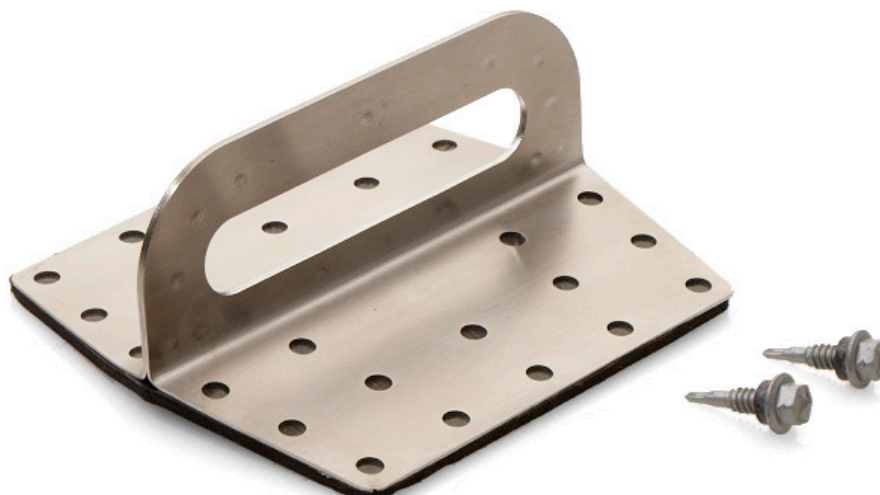




08/23 ©

The RD08, 360° fall restraint/fall arrest roof anchor to suit a variety of standing seam metal/pan roof profiles and insulated sandwich panels.



Product Description

A surface mounted stainless steel roof anchor to suit a variety of standing seam metal/pan roof profiles and insulated sandwich panels.

The roof sheeting should be fixed to a structure that is capable of taking expected loads.

LIMITATIONS:

The anchor is NOT to be utilised by more than one person at any time in accordance with AS/NZS 1891.4 (Table 3.1). Do not use if the anchor does not firmly fit the roof sheet profile or flat on the roof deck between ribs. The anchor is strength rated to 15kN for single person use only. The anchor is NOT to be used for fastening/tethering other items such as TV antennae, satellite dishes, solar panels, shade structures etc.



Technical Data

Weight (approx):	200 Grams (without fixings)
Dimensions (overall):	135mm x 150mm x 165mm nominal foot print
Screw Fixings:	28 off 5-15x25mm Hex Head Metal Batton Tekes

COMPOSITION AND MATERIALS:

The 'RD-08' is composed of 304 Stainless Steel in a mill finish. The 'RD-08' utilises twenty four (24) off 25mm long metal batten 'teks' & four (4) off M5.5 x x40mm and is surface mounted with a waterproof, self adhering EPDM foam separation strip.

APPLICABLE STANDARDS:

Complies with Australian/New Zealand Standard 1891.4 (2000) – 15kN for single person attachment.

Maintenance

The RD08 must be checked, recorded and identified annually at the by a 'competent' person as required and/or detailed in Government OH&S Acts, Codes of Practice and all applicable building codes. The RD08 must also be checked prior to any attachment or use ensuring that the anchor has not been subject to any fall loads nor that it has been tampered with. Ensure that the RD08 is firmly attached to the roof, not loose, using of all screw fixings as detailed in Item 4. Technical Data (noted above) and with no other attachments fixed to the anchor. Ensure all safety equipment to be used in conjunction with the RD08 is checked prior to use.

Distribution by:
Shingles Supply Pty Ltd
Australia & International
Order: 1300 131 881
Enquires: +61 2 9317 3553
PO Box 1346 Moss Vale NSW 2577
shinglessupply.com.au



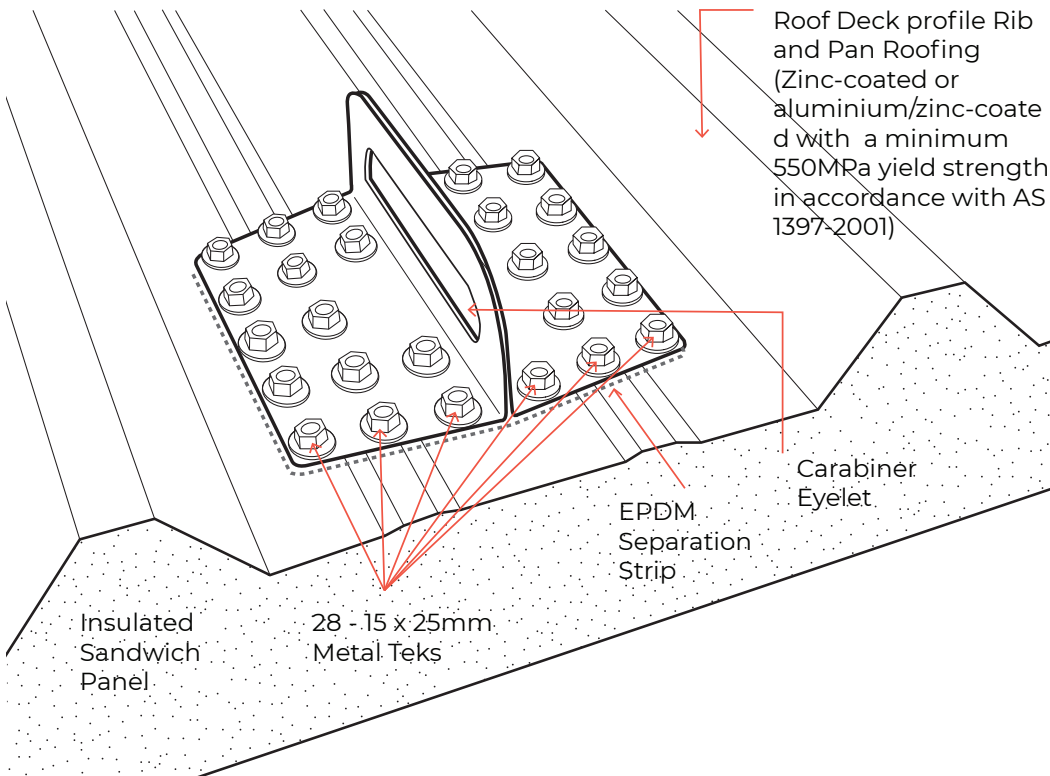
SHINGLES SUPPLY

Roofing products & safety equipment



Fixing Diagram

(To be read in conjunction with installation instructions below)



FIXING NOTES:

- The twenty eight (28) x 15-15x25mm Hex Head HG Seal 'Metal Batten Tek's are to be fixed across all holes fixing into the roof sheet only.
- Ensure that the screws are secured firmly against the anchor and the roof sheet so there is no movement.
- DO NOT over tighten the screws as this may strip the thread and compromise the screw's holding power and shear strength in the event of a fall. We suggest using a torque setting commonly available on cordless drills.
- DO NOT use existing roof screws to fasten the RD08.
- DO NOT use any other screws than those supplied or specified above.
- DO NOT reuse any screws nor the holes of an existing application if a RD08 is removed and re-installed.
- The anchor is NOT to be used for fastening/tethering other items such TV antennae, satellite dishes, solar panels, shade structures etc.

Installation Instructions

Following is a general summary of the installation method. If there is any doubt as to the surety or application of this anchor please contact Secure Anchor Systems.

ROOF REQUIREMENTS:

Apply the RD08 to an insulated trapezoidal metal roof of flat roof profile fixed in accordance with the roof sheet manufacturer's instructions, all applicable building codes, engineering design and Australian Standards. A roof sheet with minimum base metal thickness of 0.42mm (with a minimum 550MPa yield strength in accordance with AS 1397-2001) must be utilised to ensure fall arrest along the sheet when installed in accordance with these instructions.

APPLICATION & FASTENING: INSULATED SANDWICH PANELS:

Twenty eight (28) x 15-15x25mm Hex Head HG Seal 'Metal Batten Tek's are required to be used through across all holes fixing into the roof sheet. Ensure that the screws are secured firmly against the anchor and the roof sheet so there is no movement. DO NOT over tighten the screws as this may strip the thread and compromise the screw's holding power and shear strength in the event of a fall. We suggest using a torque setting commonly available on cordless drills.

FLASHING:

Make sure that the EPDM flashing/separation is fixed between the roof sheeting and the stainless steel fabric of the roof anchor ensuring a tight waterproof seal. This must also be placed to assist in preventing galvanic reaction between the stainless steel anchor body and the Colorbond or Zinalume sheeting.

The RD08 requires no additional flashings or sealing other than the application of the enclosed self adhering EPDM foam seal/separation strip. You may apply a bead of sealant around the perimeter of the anchor if there is any unsurety as to water resistance.

Secure Anchor Systems recommends that all anchor installers & users be 'competent' in accordance with AS 1891, relevant Codes of Practice and applicable OH&S acts in your state.

Secure Anchor Systems always recommends placement of anchors using a 'fall restraint' methodology and working in a 'fall restraint' mode when working at heights.

Distribution by:

Shingles Supply Pty Ltd

Australia & International

Order: 1300 131 881

Enquires: +61 2 9317 3553

PO Box 1346 Moss Vale NSW 2577

shinglessupply.com.au



SHINGLES SUPPLY

Roofing products & safety equipment