

Roof Tile Ladder Bracket



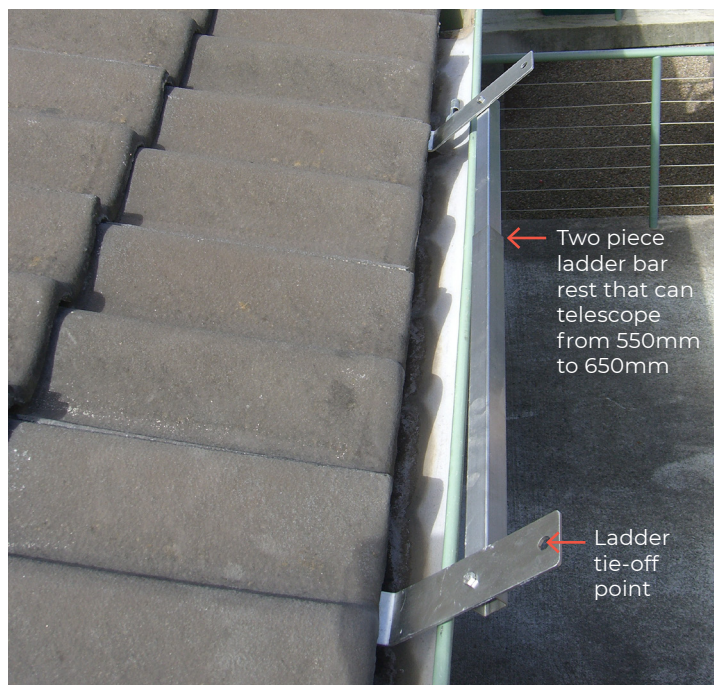
Product Description

A surface mounted stainless steel roof support bracket to suit tiled roofing, providing lateral restraint when alighting from the ladder or a roof plane.

LIMITATIONS:

The *Tile Ladder Bracket* is not to be utilised by more than one person on the ladder at any time nor should it be used or modified for use as a fall arrest/restraint device.

The arms attach to the common rafters that are set at 600mm centres the most common set out. However that does not always occur in the set out of the common rafters as they may vary from 550mm to 650mm and sometimes greater or less. Therefore the bar is a two piece that can telescope from 550mm to 650mm. If the common rafters are set at 450mm (18" in the older homes) or thereabouts the bars can be cut to fit. This will only occur in older restoration jobs not in new construction.



Technical Data

Weight (approx): 1.3 Kg
Dimensions (overall): 520mm x 50mm x 10mm nominal
Screw Fixings: 6 x 40 roof zips

COMPOSITION AND MATERIALS:

The *Tile Ladder Bracket* is composed of 304 Stainless Steel The *Tile Ladder Bracket* utilises 6 screws to surface mount the brackets.

APPLICABLE STANDARDS:

Australian/New Zealand Standard 1891.4

Maintenance

The Ladder Bracket should be checked annually at the very least by a 'competent' person as required and/or detailed in Government OH&S Acts, Codes of Practice and all applicable building codes. Ensure that the *Tile Ladder Bracket* is firmly attached to the roof and not loose with the use of all screw fixings as detailed Technical Data above. Ensure all safety equipment to be used in conjunction with the *Tile Ladder Bracket* is checked prior to use.

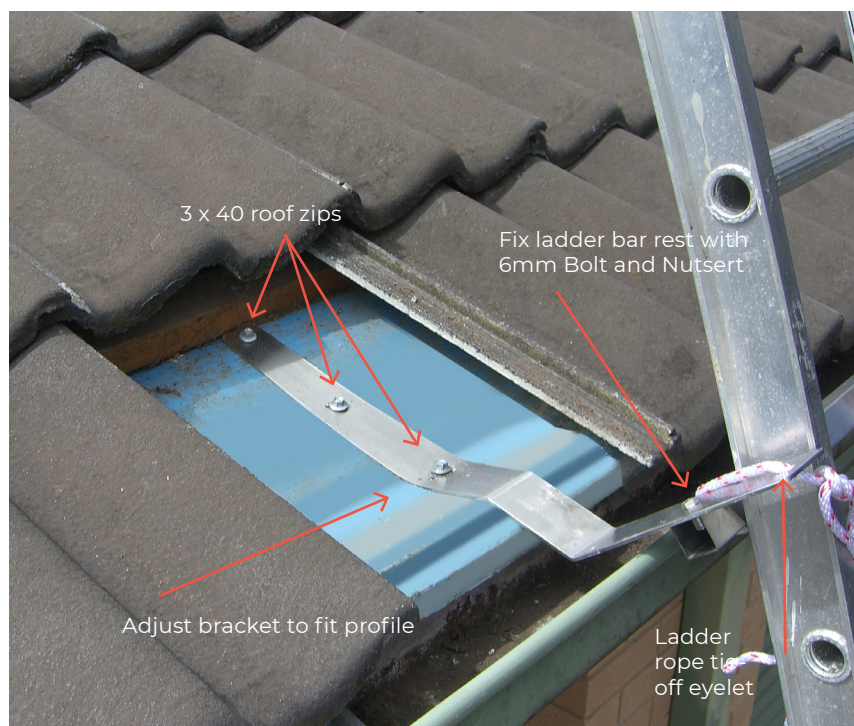
Distribution by:
Shingles Supply Pty Ltd
Australia & International
Order: 1300 131 881
Enquires: +61 2 9317 3553
PO Box 1346 Moss Vale NSW 2577
shinglessupply.com.au





Fixing Illustration

(To be read in conjunction with installation instructions below)



FIXING NOTES:

- No need to cut sarking as screws through into rafter.
- Square tube in two pieces to counter rafter spacing vary from less than 600mm rafter centres to about 700mm. For 450mm rafter centres cut long tube to suit
- Place The *Tile Ladder Bracket* on a pan between existing roofing screws. DO NOT fix into existing penetrations.
- Place Ladder Bracket on the roof sheet so that the horizontal bar is in line or just past outside edge of the gutter. Or sheeting if there is no gutter.
- Ensure that all screws are firmly fixed but NOT overtightened with all washers in tact under the heads of the screws.
- Ensure 6mm bolts are tightened and securely in place in nutsert.
- The horizontal Anchor bracket arms maybe gently bent downwards or upwards to suit the roof pitch.

Installation Instructions

Following is a general summary of the installation method. If there is any doubt as to the surety or application of this roof anchor please contact Secure Anchor Systems.

ROOF REQUIREMENTS:

Apply the *Tile Ladder Bracket* to a tiled roof that is fixed in accordance with the roof sheet manufacturer's instructions, all applicable building codes and Australian Standards.

APPLICATION & FASTENING:

No need to cut sarking as screws through into rafter.

Square tube in two pieces to counter rafter spacing vary from less than 600mm rafter centres to about 700mm. For 450mm rafter centres cut long tube to suit

A minimum of five (5) screws are required to be used on the *Tile Ladder Bracket*. Three holes are centred axially, down the face of each *Tile Ladder Bracket*. The brackets may be located up and down the roof sheet to enable the horizontal bar to sit just past the outer edge of the gutter. Place the Ladder Bracket on flat pan between an existing line of screw fixings in the roof sheet. DO NOT remove an existing screw fixing and place the Ladder Bracket in that same position utilising an existing hole.

Ensure that the Metal Batten Tekes are secured firmly against the ladder bracket and the roof sheet so there is no movement. DO NOT over tighten the screws as they may strip the thread and compromise the screw's holding power and shear strength on the sheet. We suggest using a torque setting commonly available on cordless drills for consistent application of all screws.



Distribution by:
Shingles Supply Pty Ltd
Australia & International
Order: 1300 131 881
Enquires: +61 2 9317 3553
PO Box 1346 Moss Vale NSW 2577
shinglessupply.com.au

